



WEST BENGAL MINERAL DEVELOPMENT & TRADING CORPORATION LTD

(A Govt. of West Bengal Undertaking)

CIN : U14219WB1973SGC028707
 Regd. Office : WBIIDC Building, 3rd Floor,
 DJ-10, Sector-II, Salt Lake, Kol-700091,
 Phone : 033-2359-0073
 Email : wbmtdcltd.admn@gmail.com
 www.mdtcl.wb.gov.in

Memo No. MDTC/SAND/003/Part-6/866

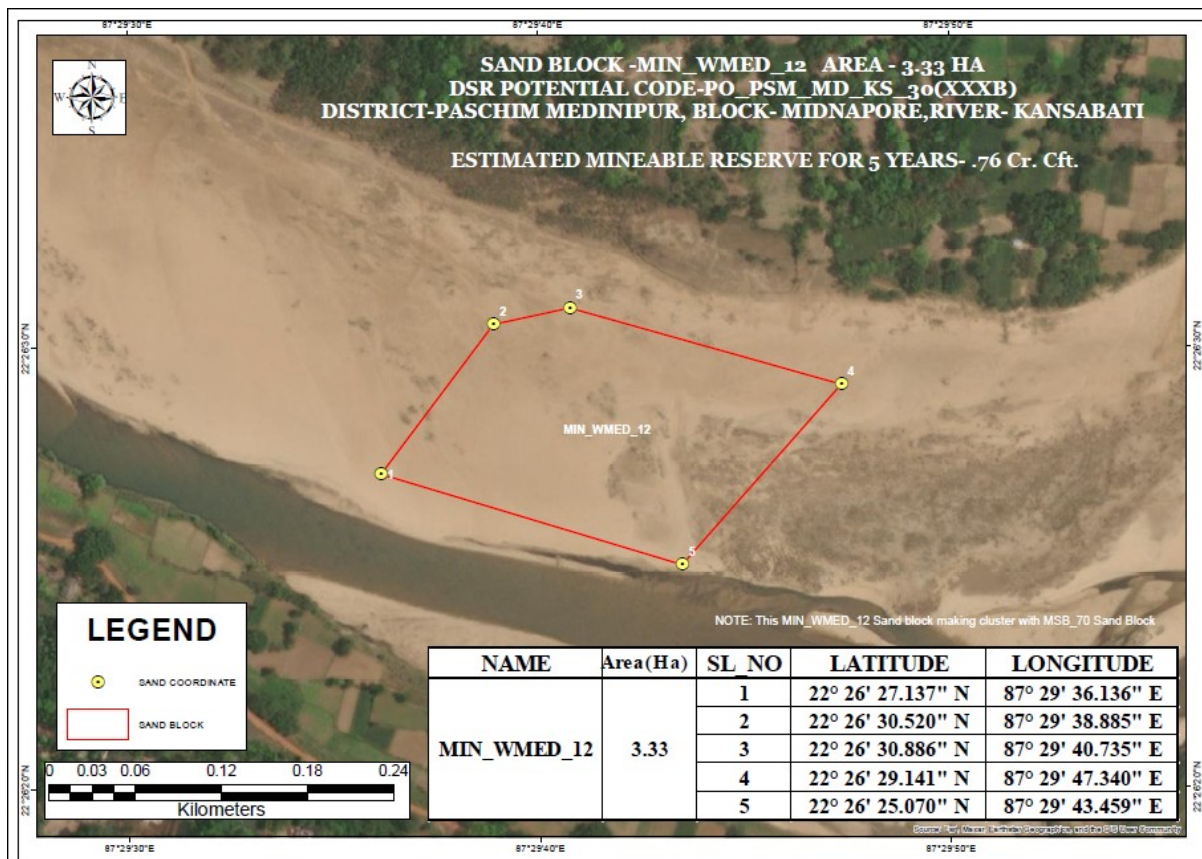
Dated: 04.04.2023

CORRIGENDUM 1

Ref: RFP No. PSHMD_4_23032023_A02 dated 23.03.2023

SI No.	Clause No.	Existing Terms and Conditions	Modified Terms and Conditions
1	2 Bid Data Sheet & Bid Schedule 4 th Row Details of Sand Block	<p>Block ID: PSHMD_4_23032023_A02</p> <p>District: Paschim Medinipur</p> <p>River: Kangsabati</p> <p>Sand block area 3.39 Ha</p> <p>Estimated Annual Mineable Reserves (Cr. Cft.): 0.154 Cr. Cft.</p> <p>Please refer Annexure 1 for geo-coordinates</p>	<p>Block ID: PSHMD_4_23032023_A02</p> <p>District: Paschim Medinipur</p> <p>River: Kangsabati</p> <p>Sand block area 3.33 Ha</p> <p>Estimated Annual Mineable Reserves (Cr. Cft.): 0.152 Cr. Cft.</p> <p>Please refer Annexure 1 for geo-coordinates</p>

Modified Annexure 1: Geo-reference Co- Ordinate of the sand Block as per Clause no. 12.1 as below :



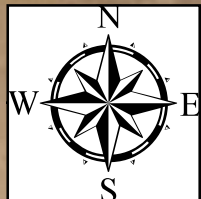
Note: This is a Cluster Block; Environmental Clearance (EC) will be taken as per the Cluster Condition.

By Order
 -sd-
 Chairman & Managing Director

87°29'30"E

87°29'40"E

87°29'50"E



SAND BLOCK -MIN_WMED_12 AREA - 3.33 HA
DSR POTENTIAL CODE-PO_PSM_MD_KS_30(XXXB)
DISTRICT-PASCHIM MEDINIPUR, BLOCK- MIDNAPORE, RIVER- KANSABATI

ESTIMATED MINEABLE RESERVE FOR 5 YEARS- .76 Cr. Cft.



MIN_WMED_12

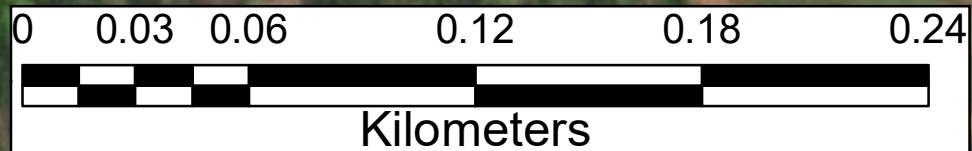
NOTE: This MIN_WMED_12 Sand block making cluster with MSB_70 Sand Block

LEGEND

 SAND COORDINATE

 SAND BLOCK

NAME	Area(Ha)	SL_NO	LATITUDE	LONGITUDE
MIN_WMED_12	3.33	1	22° 26' 27.137" N	87° 29' 36.136" E
		2	22° 26' 30.520" N	87° 29' 38.885" E
		3	22° 26' 30.886" N	87° 29' 40.735" E
		4	22° 26' 29.141" N	87° 29' 47.340" E
		5	22° 26' 25.070" N	87° 29' 43.459" E



87°29'30"E

87°29'40"E

87°29'50"E

22°26'30"N

22°26'30"N

22°26'20"N

22°26'20"N